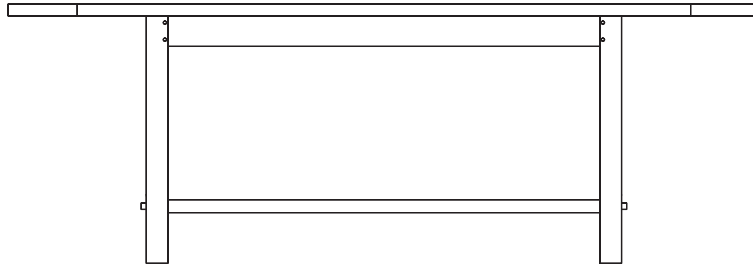




LUND TABLE
87W X 32D X 30H

HONNING.US



LUND TABLE

Dimensions: 87W X 32D X 30H
Two 18" extensions (123 OAW)

Materials: Select Plain-sliced Ash

Designed by: Maxine Snider

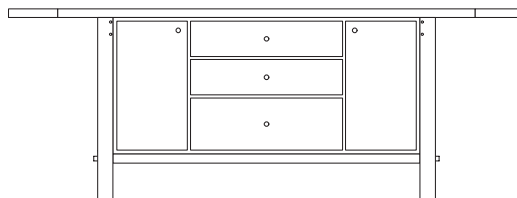
Description: The Lund Table is rooted in the simplicity and utility found in early farm tables from Europe and New England. The pegged construction, "H" stretcher, and mortise and tenon details honor the traditional joinery and craft of these early designs. Made from grain-matched ash, the Lund Table is available with optional extensions and in custom sizes for libraries and dining rooms.

SUGGESTED VARIATIONS

Coffee Table

Side Table

Console



Credenza / Buffet

HONNING

3932 N. Elston Ave. Chicago, IL 60618
+1 773.654.3777 info@honning.us www.honning.us